

Name _____ Lab Partner _____
TA Name _____ Section _____ Date _____

Experiment 2 - NMR Spectroscopy

1. Draw the structural formulas of the following compounds and indicate the number of NMR signals that would be expected for each compound.

(a) methyl iodide

(b) 2,4-dimethylpentane

(c) cyclopentane

(d) propylene (propene)

2. Draw the structural formula of the compounds that are indicated by the following data:
- (a) an alkyl halide with a molecular formula of C_3H_7Cl whose NMR spectrum contains two signals: a doublet (6H), and a multiplet (1H).

- (b) a compound with molecular formula $C_7H_{14}Cl_2$ whose NMR spectra contains three signals: a singlet (9H), a triplet (3H), and a quartet (2H).

3. Figures 3-7 are representative spectra of compounds. Based on the NMR spectra shown, please provide a reasonable structure for each compound.

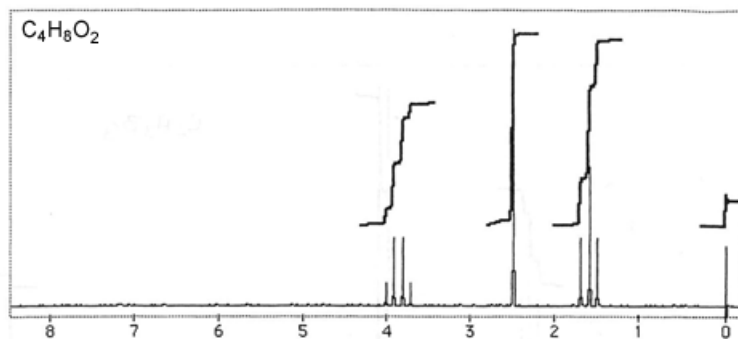


Figure 4

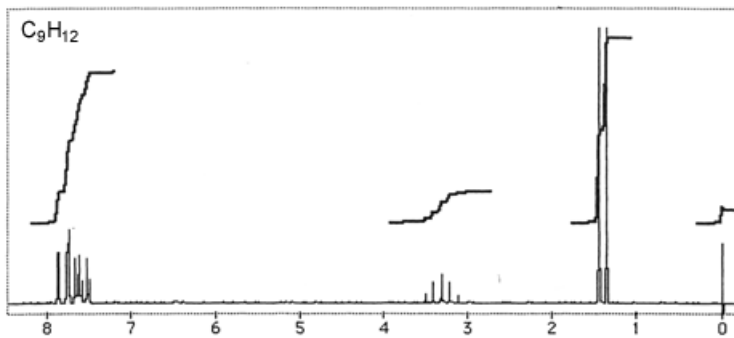


Figure 5

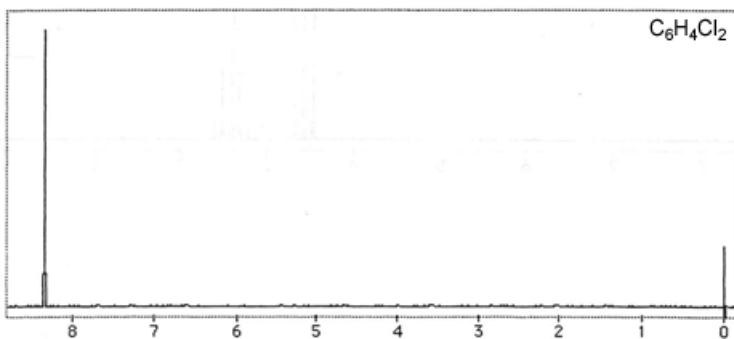


Figure 6

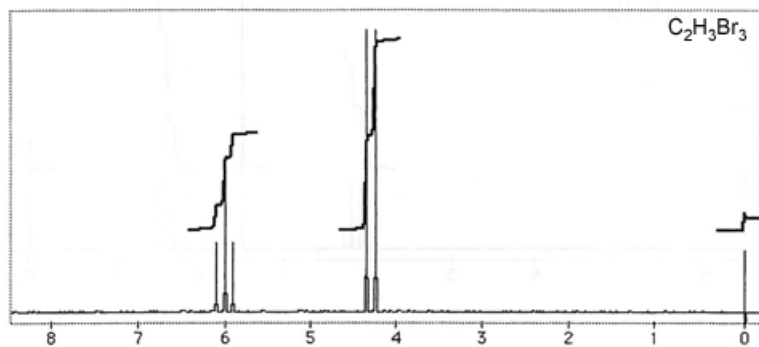


Figure 7

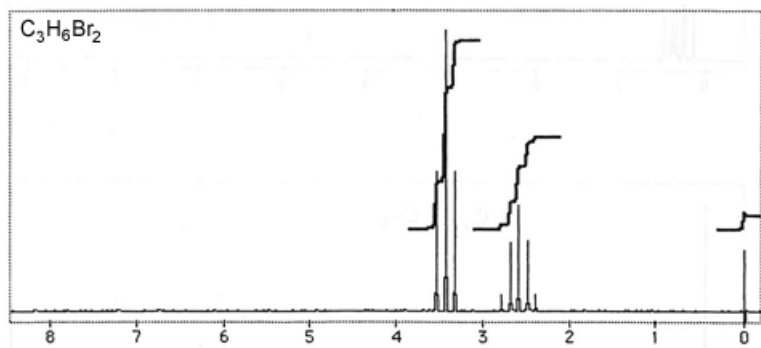


Figure 8